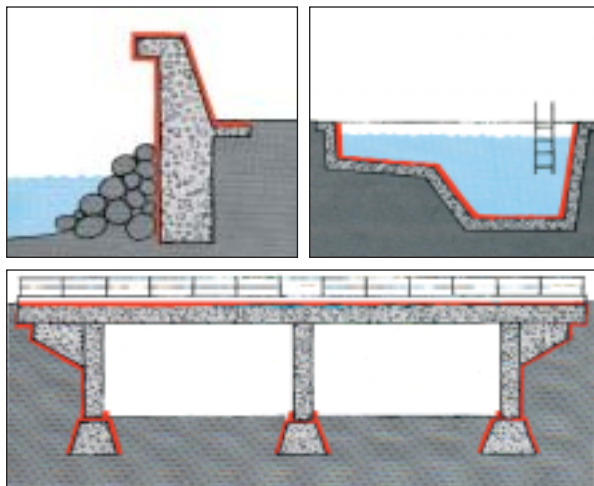
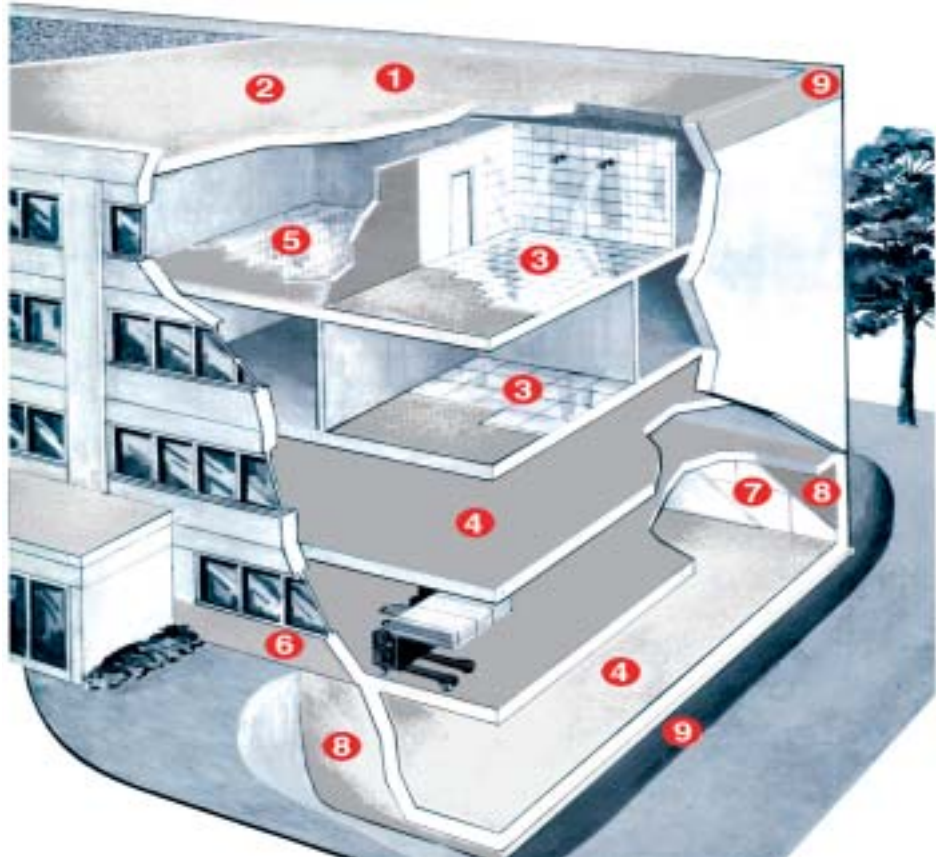


LEYCO®-PLAST AC

The superior multi-purpose, seamless and cold applied waterproofing membrane

To be applied on any old and new surfaces as

- 1 roofs**
made of concrete / with bituminous membranes
- 2 terraces**
with tiles, membranes and coatings
- 3 kitchens, bathrooms and any wet areas**
- 4 screeds and concrete slabs**
after 24h or as soon as it can be walked on
- 5 flooring adhesives**
for carpet and wood
- 6 splash zones**
paintable with all type of paints
- 7 bonding agent**
for insulation boards and tiles
- 8 tanking of basements**
when applied on positive or negative side
- 9 overall protection**
against pollution attack, chloride penetration and aggressive soil



The remarkable multi-purpose lining for building structures



The great characteristics

- **light or dark grey colour**
easily cold applied by brush, trowel, roll or spray gun
- **highly UV-resistant**
non-aging as waterproofing of roofs
- **highly elastic**
(Elongation of 70%)
- **vapor permeable**
whilst repelling water, allows the substrate to breath, $d= 3,7 \text{ m}$
- **easy to use (2-comp.)**
only on-site mixing - ready to apply!
- **light foot trafficable**
without additional protection
- **excellent adhesion**
as well to porous and non-porous as to even and uneven surfaces
- **highly effective for water bearing structures**
forming a seamless membrane and fixing tiles, structures can be filled after 24h
- **applicable to damp surfaces**
surfaces have to be damped